

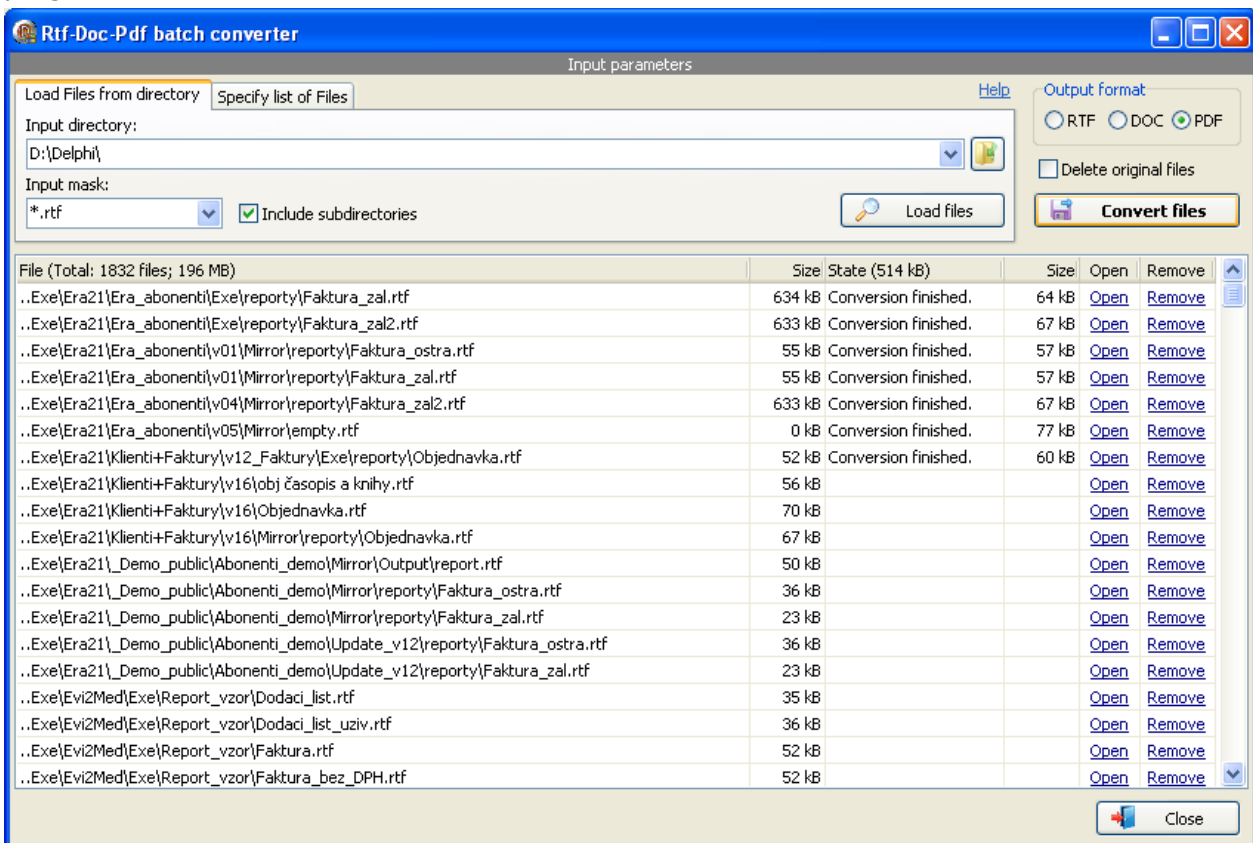
"RTF → DOC → PDF" batch converter

This tool helps to convert list of files from **TXT, RTF, DOC** format to **RTF, DOC, PDF** format. It uses MSWord OLE server for conversion, so MS Office 2007 or higher must be installed on the PC to convert files to PDF format.

It can be used in standard GUI mode or as executable called from another application with command line parameters.

GUI mode

Application contains simple window to select all input and output parameters and show progress of conversion:



List of files can be loaded automatically from specified directory and mask or manually. Each file then is converted to selected format.

Calling from another application

Rtf_Doc_Pdf.exe application can be called from any other application or from bat file.

Following command line parameters are supported:

Parameter	Description
dir=C:\test	Specify actual directory to load file from
mask=*.doc	Specify mask to load file
subdir	Specify that all subdirectory is searched for files
file=C:\test\in.doc	Add one specific file to list, parameter can be repeated any times
out-rtf	Set output format to RTF
out-doc	Set output format to DOC
out-pdf	Set output format to PDF (default)
del	Delete all original files after conversion
autorun	Specify that conversion start automatically and window is closed after conversion

Rtf_Doc_Pdf.exe produce **log.txt** file after conversion, so application can check result of conversion.

Example of log file:

```
1: Ok - ..Exe\Era21\Era_abONENTI\Exe\reporty\Faktura_test.rtf
2: Ok - ..Exe\Era21\Era_abONENTI\Exe\reporty\Faktura_zal.rtf
3: Ok - ..Exe\Era21\Era_abONENTI\Exe\reporty\Faktura_zal2.rtf
4: Error - ..Exe\Era21\Era_abONENTI\v01\Mirror\reporty\Faktura_ostra.rtf (file is corrupted)
5: Ok - ..Exe\Era21\Era_abONENTI\v01\Mirror\reporty\Faktura_zal.rtf
6: Ok - ..Exe\Era21\Era_abONENTI\v04\Mirror\reporty\Faktura_zal2.rtf
7: Ok - ..Exe\Era21\Era_abONENTI\v05\Mirror\empty.rtf
8: Ok - ..Exe\Era21\Klienti+Faktury\v12_Faktury\Exe\reporty\Objednavka.rtf
```

Author:

[Rosinsky Software](#)