

HS 23 L HS 23 WL

2 Ständer für
Lautsprecherboxen
2 Stands for
Loudspeakers



(x2)



(x2)



(x2)



(x8)



M5x16(x4)



(x8)



M5x20(x4)



D5 (x4)



4mm (x1)



1.

2.

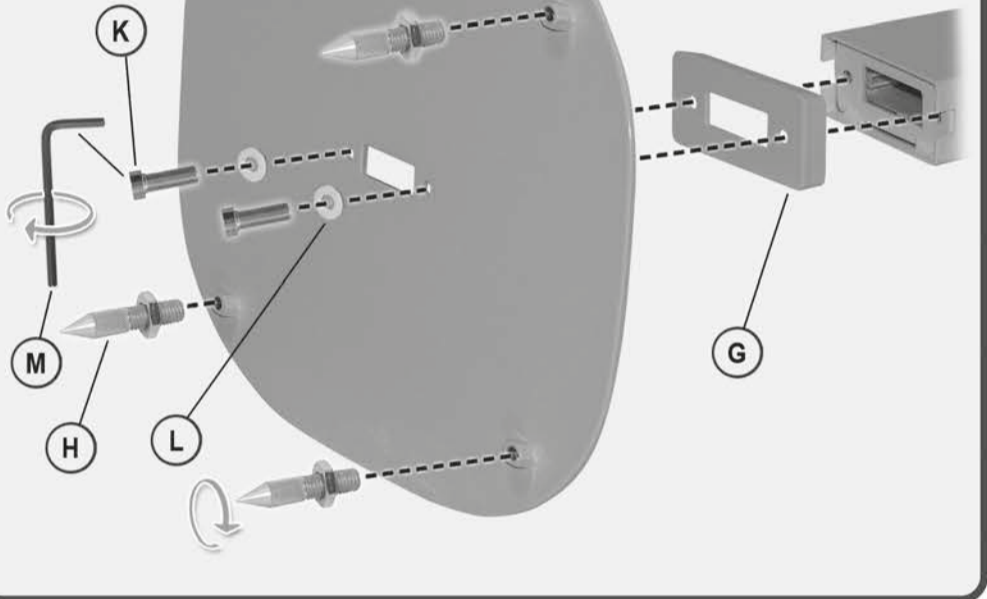
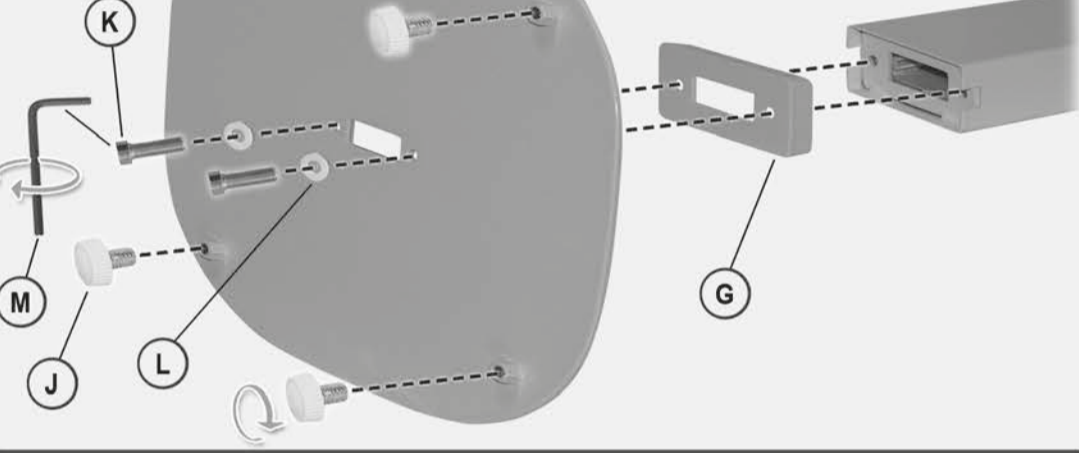
min. 10mm / at least 10mm

2 B



nur für Teppichböden / only for carpets

2 A



Montaj Rehberi
Montaringsanvisning
Montarimo instrukcija
Montážas instrukcija
Päigaldusjuhise
Asemnsohje
Ongyia suvppholgyors
Instruccions de montaje
Návod pro montáž
Instrucções de montagem
Montingsvejledning
Montážas instrukcija
Instruzioni d'uso

Montageanleitung
Assembling instructions
Instruccions de montaje
Návod pro montáž
Instrucções de montagem
Montingsvejledning
Montážas instrukcija
Instruzioni d'uso

Montageanleitung
Assembling instructions
Instruccions de montaje
Návod pro montáž
Instrucções de montagem
Montingsvejledning
Montážas instrukcija
Instruzioni d'uso

Montageanleitung Assembly Instructions

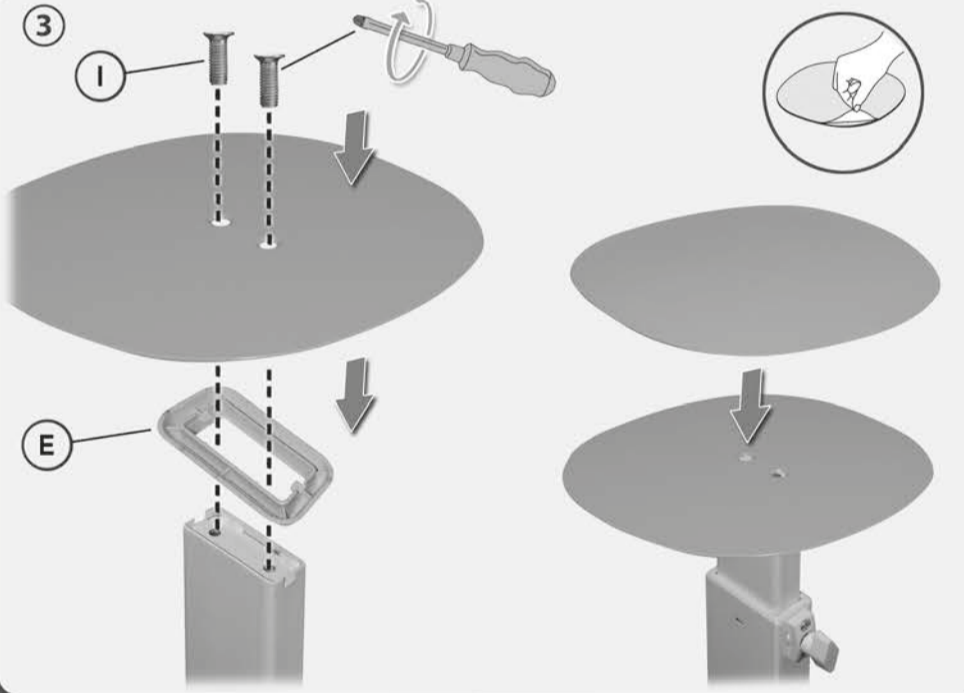
HS 23 L
HS 23 WL



my wall
mount accessories

2 Ständer für Lautsprecherboxen
2 Stands for Loudspeakers

3



4

